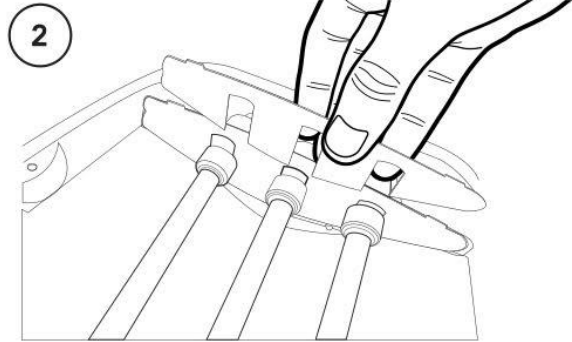
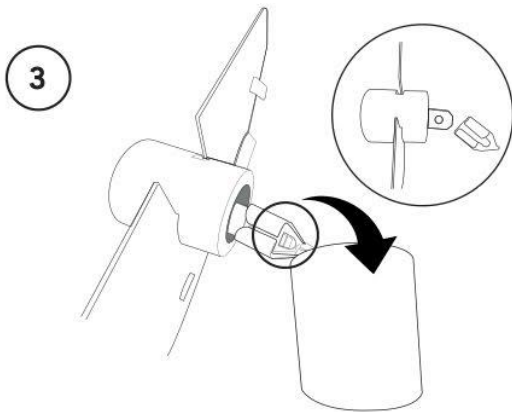


**CAUTION: Ensure the plug is disconnected from the mains before changing the bulbs.**

**1.** To gain access to the bulbs, remove the 4 screws (circled) and detach the grill from the front of the Heater Head (1).

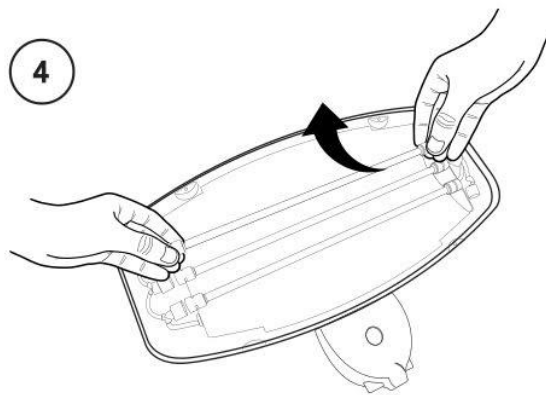


**2.** Remove the metal plate surrounding the end of the bulbs as shown. The use of a flathead screwdriver may be needed to open up the small metal tab on the top. Repeat for the other end.



**3.** Slide the rubber caps off the bulb connectors and press the small tab (circled) to disconnect from the bulbs. Repeat for the other end.

**IMPORTANT:** Ensure all connectors are correctly removed before attempting to remove a bulb. Twisting or bending may result in a bulb shattering and cause injury to the user.



**4.** Carefully remove the bulbs and replace with the correct quartz bulbs.

**! WARNING!** Do not touch the bulbs with your bare hands. Handle using the plastic connectors either end or wear protective gloves.